



## Main Features:-

- ◆ 5/2 Valve Monostable
- ◆ Operating Pressure 2-10 bar
- ◆ 24 V DC  $\pm$  10%, 110 V AC  $\pm$  10%, 230 V AC  $\pm$  10%
- ◆ Power Consumption 3 W / 5 VA

\*Temperature and pressure determined by valve body, seat etc.



## Suitable Applications & Approvals:



INDUSTRY

## WB11-SOL24VDC

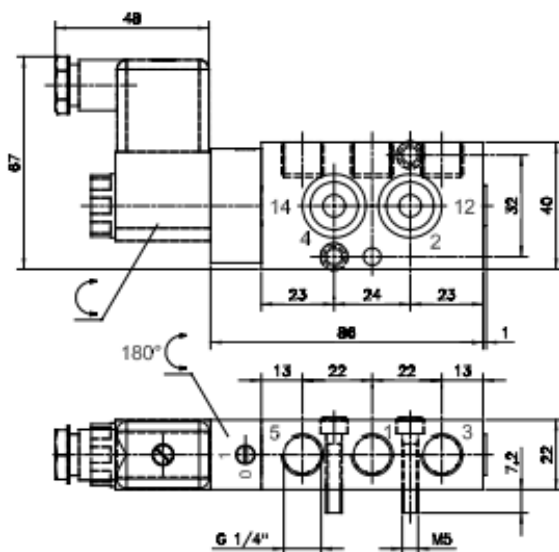
MANUFACTURER: **Stafsjö**   
SINCE 1666

## Solenoid

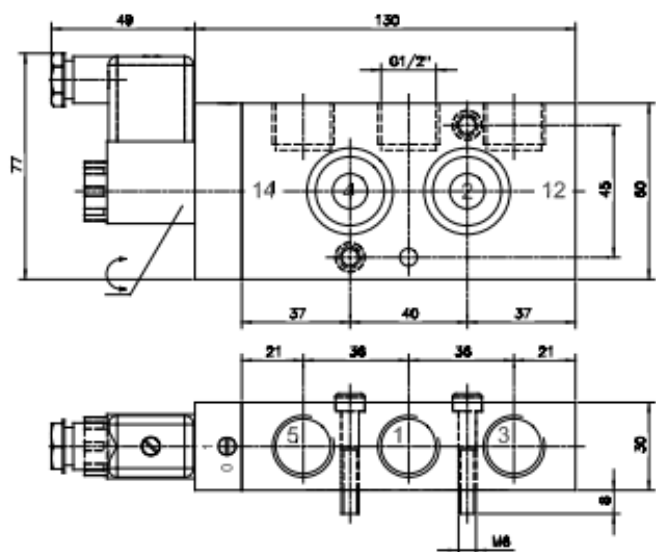
Stafsjö's standard solenoid valves comes from Hafner. It has a housing of anodized aluminum and its interface corresponds to the Namur standard, which gives a compact design of the actuator/solenoid valve unit. It is a 5/2 way valve available in 1/4" and 1/2". The solenoid valve is supplied with a pneumatic spring return and as standard Stafsjö install it on the pneumatic actuator to close the knife gate valve at any electrical signal interruption. Further to this the solenoid valve is supplied as standard with manual override to turn, coils in either 24 V DC, 110 V AC or 230 V AC, silencers with speed control and a connector with LED indicator. The solenoid valve correspond to IP class 65.

## Dimensions

Version: 1/4" (silencers excluded)



Version: 1/2" (silencers excluded)



ACCESSORIES



T +44 (0)1386 552369

E sales@allvalves.co.uk

W www.allvalves.co.uk

F +44 (0)1386 554227



Stafsjo, a Swedish manufacturer of Knife Gate Valves offering the highest quality of manual and actuated knife gate valves for various applications, from DN50 to DN1200.

## WB11 - SOL24VDC

DIMENSIONAL AND TECHNICAL SPECIFICATIONS

Chain Wheel Size	MV Size
Function	5/2 valve monostable
Interface	Namur 1 interface according to VDI/VDE 3845 on 1/4". Namur 2 interface on 1/2"
Material specifications	Anodized aluminium body, other internal parts and sealings in stainless steel, brass, POM and NBR.
Manual override	Standard on all versions
Indication type	Red LED
Media	Cleaned and lubricated or cleaned and unlubricated compressed air quality level 5 acc. ISO 8573-1
Fluid temperature	Between -10°C and +50°C on AC-coils and -10°C and +60°C on DC-coils. Others on request.
Air-flow	1/4" 1250 l/min - 1/2" 3000 l/min
Operating pressure	2-10 bar
Voltage	24 V DC ± 10%, 110 V AC ± 10%, 230 V AC ± 10%
Power consumption	3 W / 5 VA
Cable connection diameter	6-8 mm
Protection	IP65. IP67 on request.
ATEX approvals	Only on request



T +44 (0)1386 552369

E sales@allvalves.co.uk

W www.allvalves.co.uk

F +44 (0)1386 554227